



Developing a Strategic Vision and Translating this into an Action Plan

Maura Walsh
IRD Duhallow
8th May, 2009



GEOATLAS.com © 2004 © Graphi-Ogre

IRD Duhallow includes North West Cork and South East Kerry, is about 1,800 sq.km with a population of 30,000 & density of 16 per sp.km. It is largely rural, over 85% live in the open countryside or in settlements of less than 200 people. Duhallow has four market towns: Kanturk (Pop 1915) Millstreet (Pop 1401) Newmarket (Pop 949) and Rathmore (Pop 611) and 32 villages

IRD Duhallow Background & Response to the Issues

- ◆ Natural Area of Development - across County bounds
- ◆ Integrated Local Development Company & Reg Chy
- ◆ Company Ltd by guarantee, not having Share Capital
- ◆ Founded in 1989 by local businessman
- ◆ Partnership of State, Community & Local Authority
- Structure now laid down by Government - Challenges
- ◆ Initial aim to generate jobs through Tourism to stem decline – limited- people may not live where they work
- ◆ Adjusted policy to include Social Development
- ◆ Strong emphasis on training & building Social Capital
- ◆ Little Red Hen Philosophy...Having asked – do it yourself

Bottom up Approach

- ◆ One of the main anchors of LEADER
- ◆ Its about doing things With people not for people
- ◆ Its about Teaching to Fish NOT Giving Out Fish
- ◆ Its about investing in Community Training
- In LEADER 1 Duhallow had 3 active communities now it has 32 geographically and over 60 issue based
- ◆ Know that communities must progress from low risk low impact projects to community

IRD Duhallow

The Local Action Group

simply as a LEADER Administration



OR



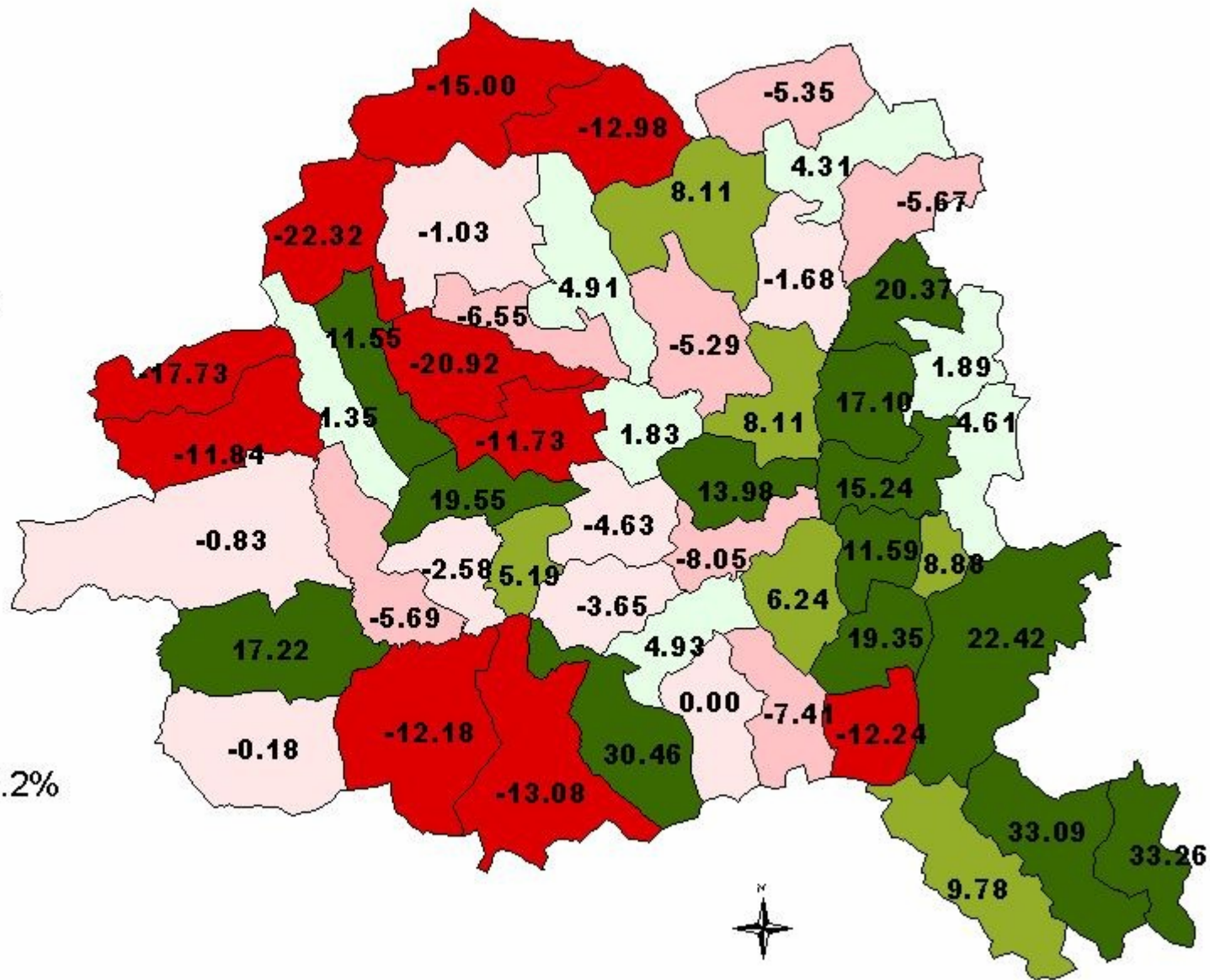
A Local Rural Development Company operating across a wide range of Programmes and Initiatives to meet the needs of the community and region

The Issues

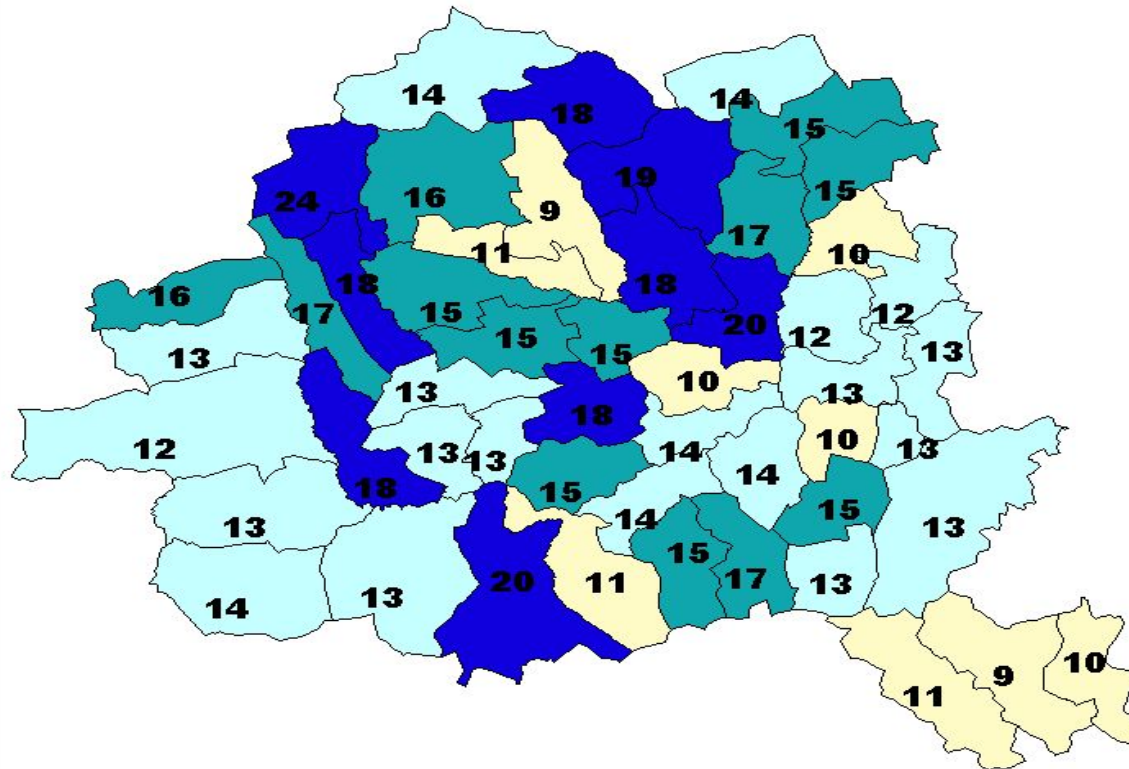
- ◆ Peripheral location backing on to 2 other peripheries
- ◆ Decades of Out-migration = declining population
- ◆ Many left have depression/alcohol dependency
- ◆ National policy on Forestry & Wind Farms
- ◆ Difficulty in getting Rural planning permissions
- ◆ Closure of practically all Duhallow Factories
- ◆ Very little "white collar" Employment
- ◆ Decline in Agriculture
- ◆ Structure of farms and poor quality of land
- ◆ Lack of Rural Transport and Childcare Facilities
- ◆ Continuous Negative Messages in the Media

Percentage Population Change in Duhallow, 1996 - 2006.

- Over 10% decline
- 5% to 10% decline
- Up to 5% decline
- Up to 5% increase
- 5% to 10% increase
- Over 10% increase

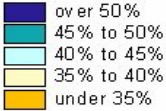
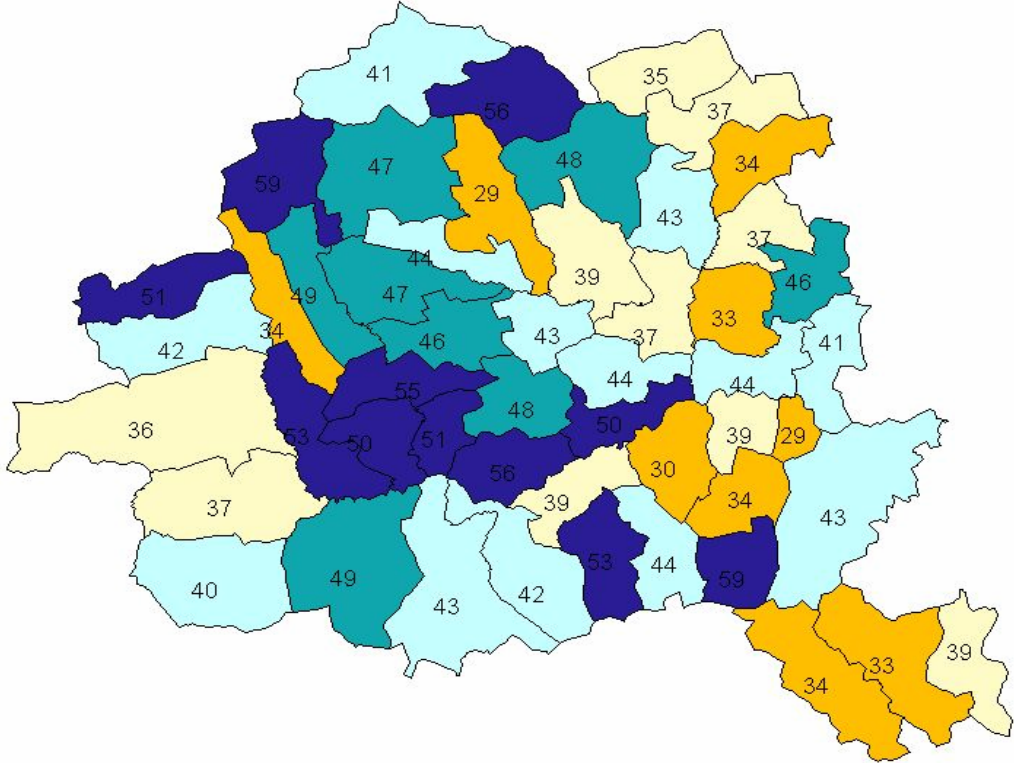


Percentage of the Population Aged 65 years and over
in Duhallow, 2006.



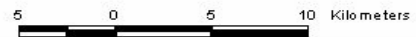
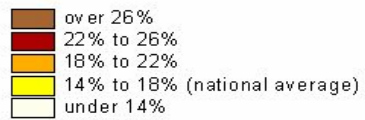
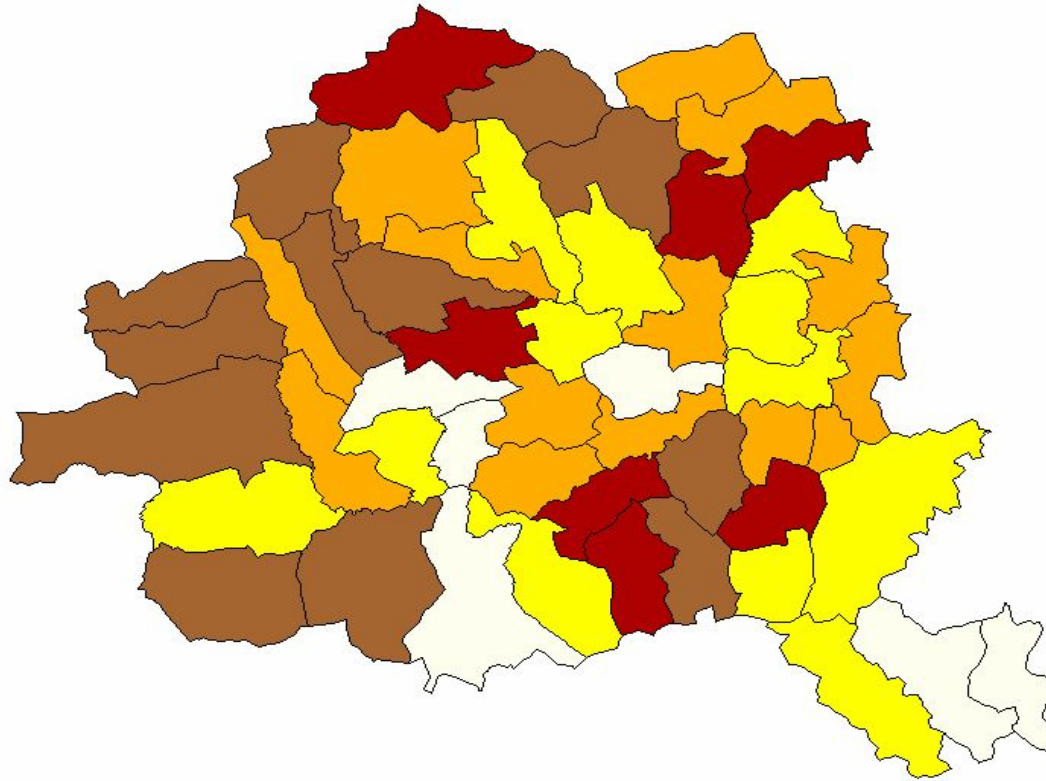
5 0 5 10 15 Kilometers

Percentage of Total Housing Stock,
constructed pre-1960, in Duhallow, 2006



5 0 5 10 15 Kilometers

Educational Attainment Levels
Percentage of Persons Aged 15+ Years, not in full-time education,
who completed their education at the age of 15 or younger.



Addressing the Issues

- ◆ LEADER = strong Community Infrastructure
- ◆ LDSIP addresses Social Issues & Groups
- ◆ Do not allow defeatism take over
- ◆ Play to your strengths – even if weaknesses
- ◆ Supporting Local Enterprise creating local jobs
- ◆ Positive identity for area – Tourism potential
- ◆ Community Enterprise has huge potential
- ◆ EOCP- Developed 6 Community Creches
- ◆ Rural Transport Initiative carries over 35,000
- ◆ Warmer Homes insulates 400 houses per year
- ◆ Community Food Service deliver 17,000 meals
- ◆ Rural Social Scheme supports 58 Small Holders

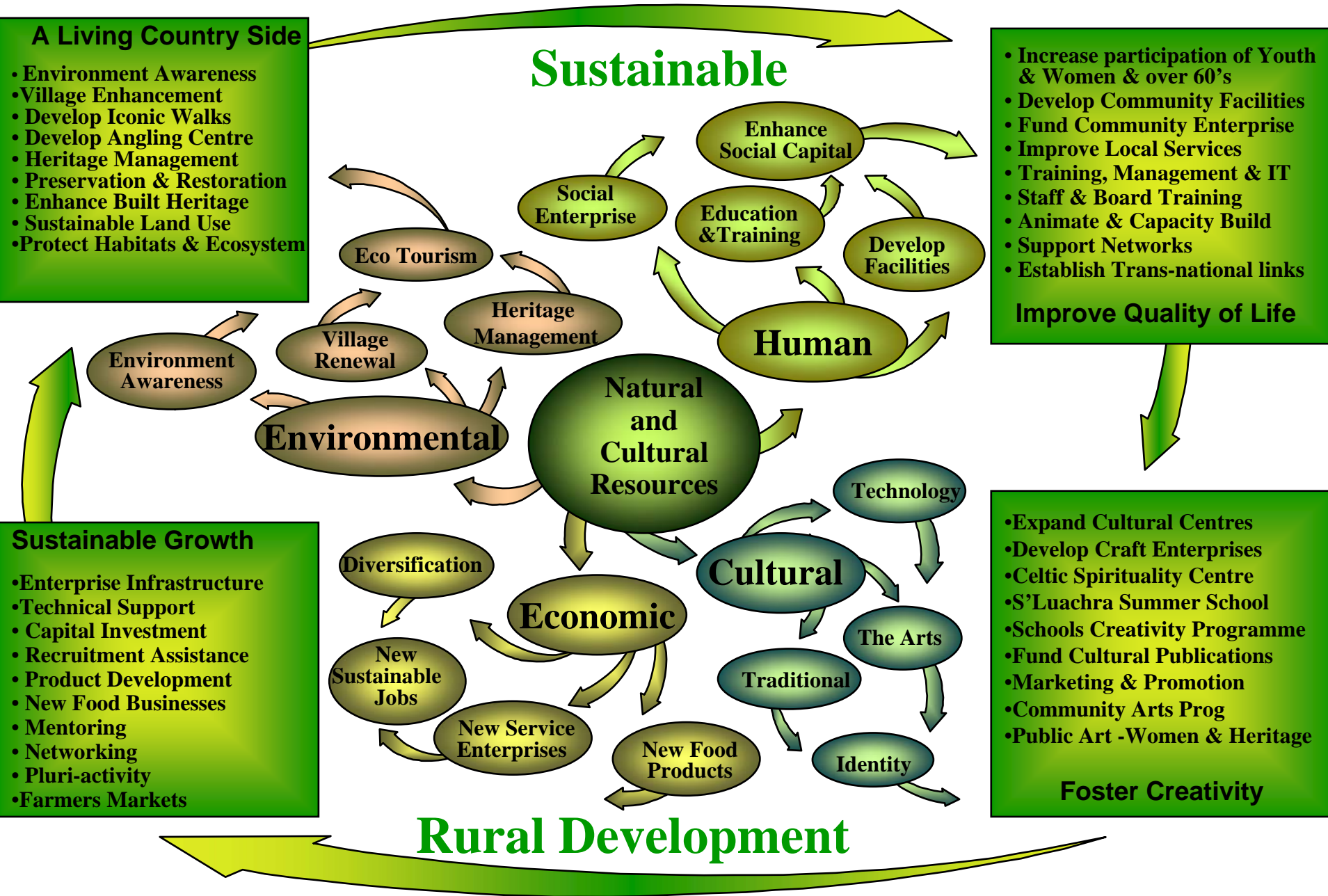
Addressing Specific At-risk Groups

- ◆ Strong Women's Forum
- ◆ Established Carers Support Group
- ◆ Support Groups for Lone Parents – PAL
- ◆ Support for People with Disabilities
- ◆ Youth –Established & Support Youth Clubs- Info guide
- ◆ Mental Ill-health through TEP and Jig Saw
- ◆ Time To Talk and Time To Listen
- ◆ Bereavement & Suicide Support Group, 1:1
- ◆ Domestic Violence – Support Group
- ◆ Foreign Nationals – 2 Social Groups Kanturk, R'more
- ◆ Job Centre – Career Guidance, CV & Interview Prep
- ◆ Enterprise Network
- ◆ Farmers – Focal Farmer Programme since 1994

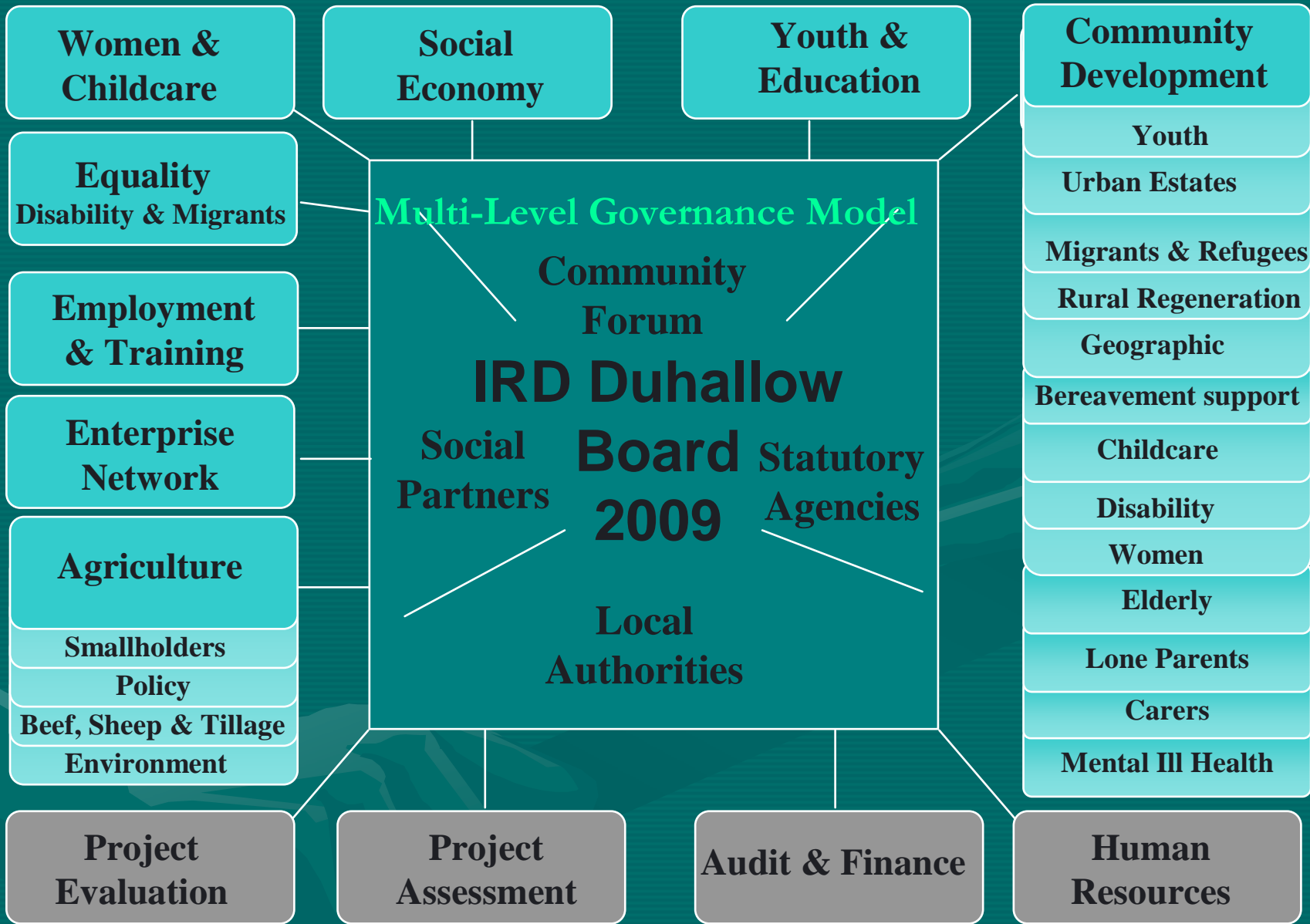
Developing an Area Strategy

- ◆ Decide the Plan Process
- ◆ Profile the Area
- ◆ Analyse all Available Statistics
- ◆ Begin Meaningful Consultation
- ◆ S.W.O.T.
- ◆ Agree vision set objectives & goals
- ◆ Prioritise –Set Targets & Indicators
- ◆ Present Draft Plan (Meaningful Consultation)
- ◆ Finalise Plan

IRD Duhallow LEADER 2007-2013 Strategic Overview



<p>Youth & Edu. Youth & Ed Working Group</p>	<p>Community Development Community Development Working Group</p>	<p>Women & Childcare Women & Childcare Working Group</p>	<p>Employment & Training E & T Working Group</p>	<p>Equality & Migrants Equality Disability & Migrants Working Group</p>
<p>Recycling Edu Prog 15 schools - 400 kids</p>	<p>2 Leadership Progs to train 120 people</p>	<p>2 new community crèches</p>	<p>Establish multi-level Training Centre</p>	<p>1 Bereavement Support Group</p>
<p>Feasibility study in 5 primary schools Re-Arts education</p>	<p>Estate management in 8 estates 24 village & 4 town renewal plans</p>	<p>5 Mother/toddler group</p>	<p>90 Women in Preparation for work 500 in Adult Ed progs</p>	<p>4 Integration Programmes for 160 Migrant Workers</p>
<p>7 New Play Areas</p>	<p>Upgrade 20 Community halls 4 Youth Cafes</p>	<p>6 Conferences- Women</p>	<p>10 IT training progs w/ 120 trained</p>	<p>Community Dev Info in 3 Languages</p>
<p>1 Outdoor Pursuits & Leadership Prog.</p>	<p>8 Community Playgrounds 6 Outdoor Gyms</p>	<p>5 Personal Development courses</p>	<p>6 IT access points est.</p>	<p>10 English Language classes for 150</p>
<p>10 New Youth Clubs for 400 youth Expand Youth forum</p>	<p>1 Off-road Cycling Track Establish Drama Festival</p>	<p>40 Start-up Business 6 new Monuments</p>	<p>30 Communities in Introduction to IT 30 Environment training</p>	<p>Support Group for 40 with Mental Ill Health 2 Suicide Prevention Programmes</p>
<p>4 “Time to Talk Time to Listen”</p>	<p>3 musicals, 6 feiseanna and 6 Carnivals 30 publications- Heritage Culture</p>	<p>Increase women’s participation by 100 6 New Groups</p>	<p>30 Com Ctr. Mgt. 20 Mgt. Com. Enterprise</p>	<p>1 Annual Equality Award for most inclusive Communities and Businesses</p>
<p>100 youth in 3 Intergenerational Learning projects</p>	<p>Enhance greens in 10 villages. 2 Community Parklands</p>	<p>20% increase in Network membership 5 Seminars organised</p>	<p>3 Com Dev- 40 trained 4 Heritage Mgt.</p>	
<p>Establish Summer- school for Sliabh Luachra</p>	<p>4 Workshops Habitat Mgt. Est. 5 Re-cycling/Composting</p>	<p>10 Information Evenings</p>	<p>125 Volunteers trained</p>	
<p>Run 6 traditional music summer camps 1 youth TNP</p>	<p>6 Public Art Monuments 10,000 Newsletters/month 1 Com Resource Pack 5 TNP w/ Africa, EU, & non-EU</p>	<p>Participation in 3 outside Networks</p>	<p>125 H&S trained 80 Board/Staff trained</p>	



Operational Sub-Committees



Strategic Working Groups



Strategic Working Group Sub-Committees

Report to April Board Meeting. Women & Childcare Working Group

5 Year Targets (LEADER) 1 Year Target (LDSIP)	Achieved to April 09	Remaining to Achieve 09-13	Comments
Support 2 New Community Childcare Facilities	Capital funding 2009-2010 cut by government - no work will be funded this year or next year.	2	6 already established
5 Seminars & 4 workshops	Workshops planned for the Autumn Women in Enterprise	2010 – Nora Herlihy Centenary	1 Seminar planned for 2009 and Computer Classes in the Autumn
1 Information Seminar on Childcare Issues	Pre-development work through Development Officers County Childcare Networks	Autumn 2009 seminar with CCC	Cork County Childcare Committee's to have 2 networking events per year
8 new Parent & Toddler Group & Support current groups also	3 existing groups participating in Workshops. Pre development ongoing	8	CCC have funding for P&T Groups will support groups to access this fund
Training/ Workshops	2 Play Workshops (60 participants)	Target Achieved	May increase target
6 Conferences Mna Dhuthalla	Work on Nora Herlihy publication - LEADER	6 -2010 Nora Herlihy	Rathmore Cr Un will sponsor project
Double women's participation	Animation ongoing -new members recruited		
5 Personal Development	1 Career Compass for Women Prog decided	4	1 more at end of 2009
Participation in 3 Outside & 2 Internal Networks	N W C I, One Parent Exchange & Network, Kerry & Cork CCC		
10 new Groups in Forum	Animation currently ongoing		members to recruit new groups
Women & Heritage – 6 more Mna Dhuthalla Monuments		6 1. 2010 Nora Herlihy	Rathmore Credit Union will sponsor a project:seminar, a book & monument
Domestic Violence; 1 Training Programme 2 Field Trips	Training Commenced 15 participants 1 West Cork Women's Project	Target achieved 09 1. Visit to Adapt Tralee	Adapt visit to be held in May 2009

Getting the Message Out

- ◆ Monthly Newsletter delivered to 10,000 homes
- ◆ Community & Public Meetings
- ◆ Brochures in Post Offices, Surgeries, Shops
- ◆ Annual Report through Community Meetings
- ◆ Articles in local Cork & Kerryman
- ◆ Coverage in County Sound/Kerry Radio
- ◆ Calling to 500 homes a year with different services
- ◆ Hard to beat the personal touch – the most effective

THE SEVEN DEADLY SINS OF DEVELOPMENT

- WITHOUT PARTICIPATION
- WITHOUT INFRASTRUCTURE
- WITHOUT ENVIRONMENT
- WITHOUT WOMEN
- WITHOUT MOBILISATION
- WITHOUT THE DO-ABLE
- WITHOUT THE POOR

